

INTER-FAB

2002 Model
Whitewater™ ♦ Slide Rock™ ♦ Wild Ride™
INSTALLATION MANUAL



Whitewater™ Slide
(4' @ Seat)



Wild Ride™ Slide
(6'6" @ seat)



Slide Rock™
(4' @ Seat)
Right Turn Slide Only

3050 South Alvernon Way Tucson, AZ 85713
520.790.7040 / 800.737.5386 / Fax 520.790.7127
www.inter-fab.com

Table of Contents

Product Safety.....	1
Water Stub-up Placement.....	2-3
Hardware Packages.....	3
Slide Components.....	4
Step 1: Flume Assembly.....	5
Step 2: Legs to Flume Assembly.....	5
Step 3: Step to Flume Assembly.....	6
Step 4: Handrail Assembly.....	6
Step 5: Slide Anchoring; On-Deck	7
In-Deck & Paver Kit Installation.....	8
Water Supply.....	9
Slide Rock Panel Installation.....	10
Slide Care & Maintenance.....	11
Stainless Steel Rail Maintenance.....	12
Inter-Fab, Inc. Limited Warranty.....	12

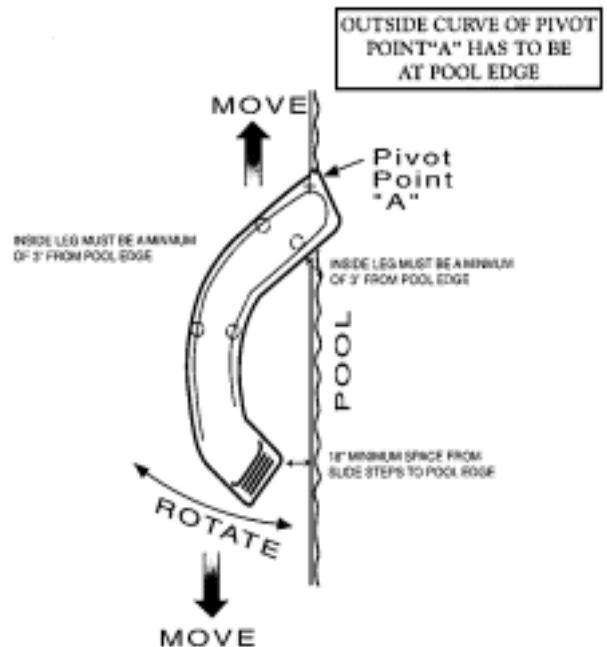
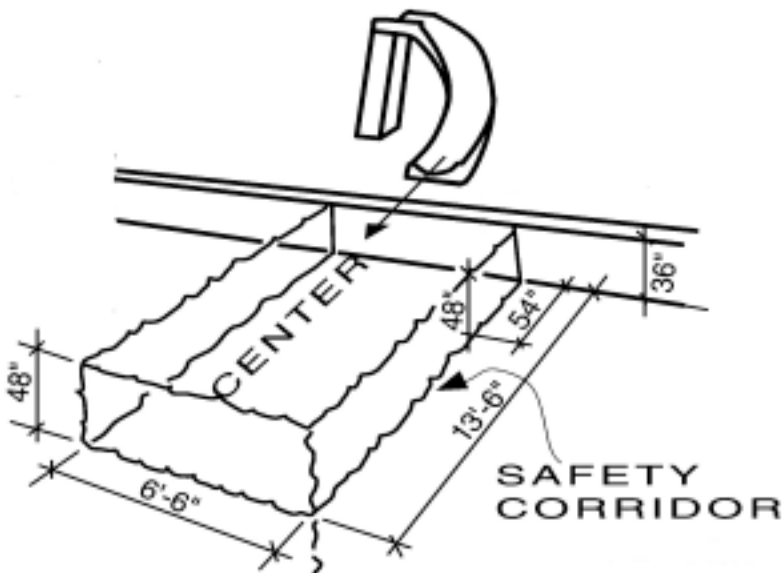
Safety First!

This equipment is designed for residential pool use only; not for commercial use.

- When installed according to instructions, this product conforms to ALL Consumer Product Safety Standard Guidelines.
- Maintain adult supervision at all times.
- Use slide in sitting position only.
- Slide only when slide path is free of swimmers and obstructions.
- Only one person on slide at a time.
- No standing on flume of slide.
- No jumping or diving from slide.

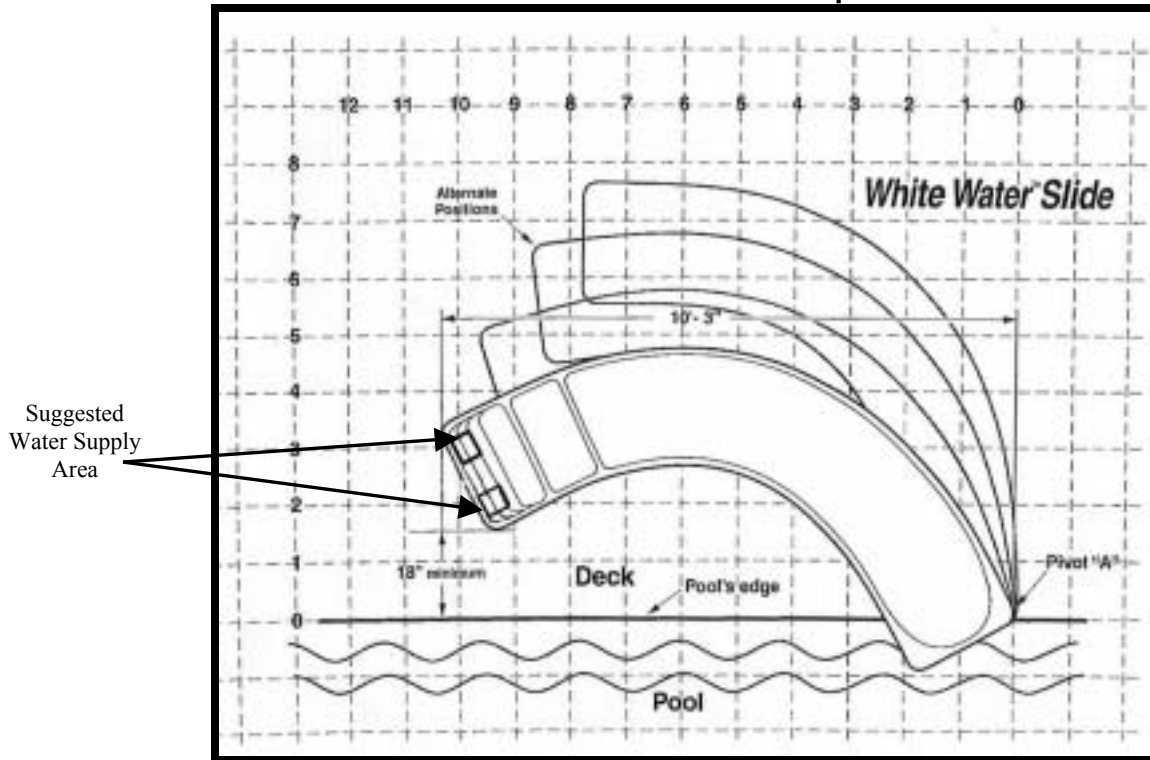
ALL SLIDES SHOULD BE GROUNDED:
In-deck anchors will be grounded before deck is poured. Check local electrical code requirements.

*The exit point of the flume can be no higher than 20" above water

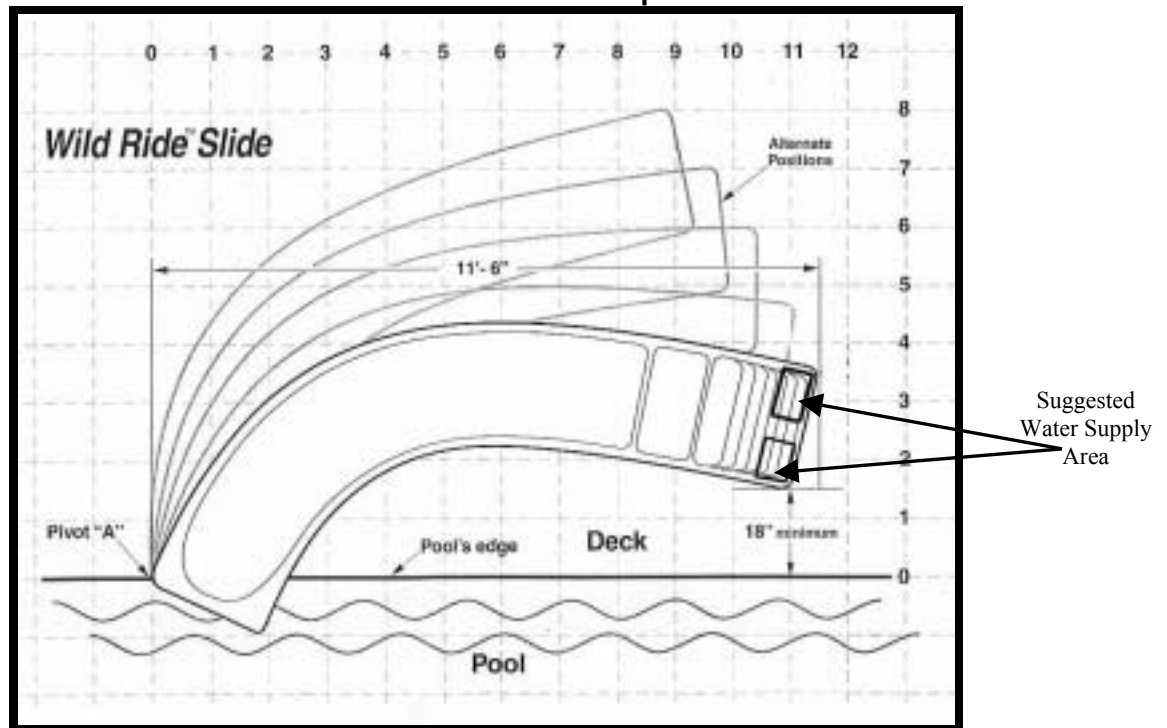


Foreword: Before beginning the assembly process of the slide, determine where it will be positioned. Slide drawings (top view) for both the Whitewater™ and Wild Ride™ have been provided. Locate & prepare your stub-up site if applicable. Two suggested water supply stub-up sites are indicated.

Whitewater™ Water Stub-up Placement



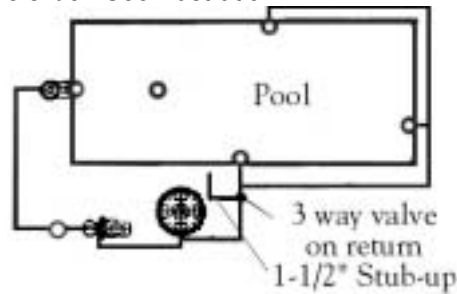
Wild Ride™ Water Stub-up Placement



Note: Deck dimensions are measured in feet.

Slide Stub-up:

It is suggested that when installing the plumbing stub-up for the slide, you install a 3-way valve in the return line at the filter equipment to ensure proper water flow to the slide. See illustration.



Important Notice: Plumbing from stub-up at the deck to the slide water source is not provided. When plumbing to the slide a 1 1/2" x 1" reducer bushing will be needed to connect your preferred slide plumbing. This reducer can be found at any local pool supply or hardware store.

Hardware Packages for Assembly

<p>Packet #1 Wild Ride™ Step Assembly</p> <p>Handrails - A (6) D (6) Step to Step C(6) G (12) J (6)</p> <p>Step to Flume - J (5) G (5) M (5)</p>	
<p>Packet #2 Flume & Legs Assembly Wild Ride™ & Whitewater™</p> <p>Flume to Flume - R (5) E (10) H (5)</p> <p>Legs to Flume - J (4) K (4) G (8)</p>	
<p>Packet #3 Wild Ride™ & Whitewater™</p> <p>Bracket to Step - B (2) F (4) I (2)</p>	<p>Bracket to ground - L(2) F (2) I (2) Q (2)</p>
<p>Packet #4 Wild Ride™ & Whitewater™</p> <p>N (6) O (11) P (25)</p>	<p>Packet #6 Deck Anchor Hardware</p> <p>L(12) K (4) J (4) G (8)</p>
<p>Packet #5 Whitewater™ Steps & Handrails</p> <p>Handrails - A (4) D (4)</p>	<p>Step to Flume - J (5) G (5) M (5)</p>

***Please see list below for hardware sizes.**

Note: Powder coated hardware items M & Q are in a separate package

A – Hex Head Bolt 1/2" – 13 x 1 1/2"
 B – Hex Head Bolt 3/8" - 16 x 1"
 C – Hex Head Bolt 1/4" – 20 x 1"
 D – Flat Washers 1/2" x 1 3/8"
 E – Flat Washers 1/2" x 3/8"
 F – Flat Washers 3/8" x 7/8"
 G – Flat washers 1/4" x 5/8"
 H – Hex Nuts 3/8"

I – Hex Nuts 3/8"
 J – Hex Nuts 1/4"
 K – Hex Head Bolt 1/4" – 20 x 2 1/4"
 L – Concrete Anchor 3/8" x 2 3/4"
 M – Allen Pan Head Bolts 1/4" – 20 x 1"
 N – Rubber Nut Cap 1/2"
 O – Rubber Nut Cap 3/8"
 P – Rubber Nut Cap 1/4"

Q – L-Bracket
 R – Hex Head Bolt 3/8" x 2"

***See page 8 for Paver Kit hardware.**

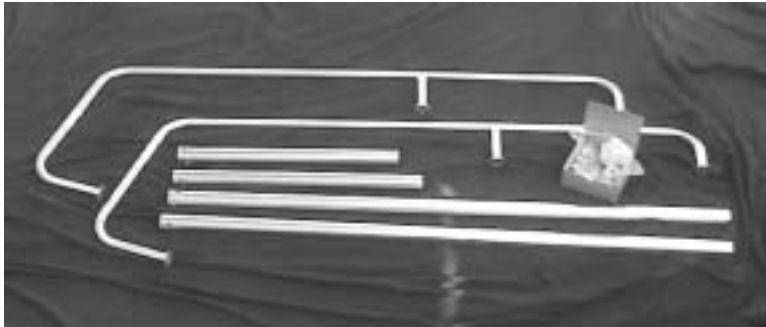
Slide Components



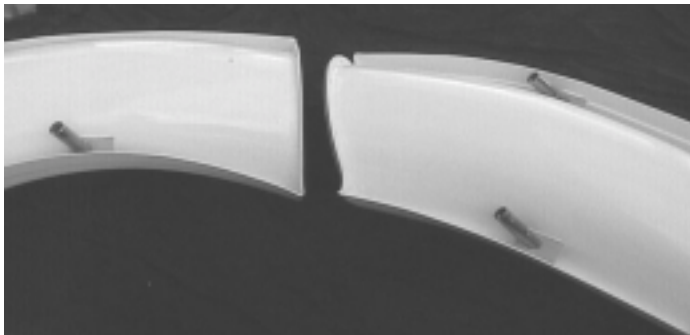
Assembly Tools:

- ◆ Socket wrench
- ◆ 7/16", 9/16" & 3/4" sockets and extensions
- ◆ 7/16" & 9/16" wrenches
- ◆ 5/32" Allen wrench
- ◆ Hammer Drill & 3/8" drill bit (not shown)
- ◆ Vice Grips (Optional: not shown)
- ◆ Step stool/ladder (not shown)
- ◆ Center Punch (Ref: Page 7)

Wild Ride™ Rail Package



Wild Ride™ and Whitewater™ Flume



Whitewater™ Rail Package



Wild Ride™ Step



Whitewater™ Step



Step 1: Flume Assembly

Open box and remove slide components and hardware. Flatten box and use it as a protective surface to avoid scratching the acrylic parts. Turn flume sections upside down, check flume gasket integrity (**Fig. 1**)

Align bolt holes on the flanges. Use vice grips to hold halves together. (**Fig. 2**) Insert bolts – hardware package #2, flume to flume (**Fig. 3**) **Note:** (Order: Bolts/washers, slide flange/slide flange, washers/nuts) Check flume at inside seam for even fit. Hand tighten.

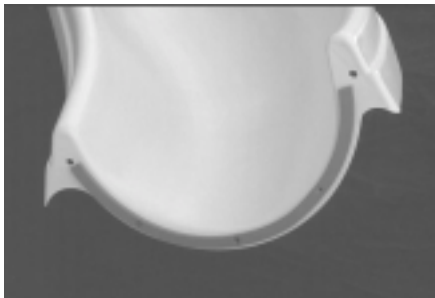


Fig. 1

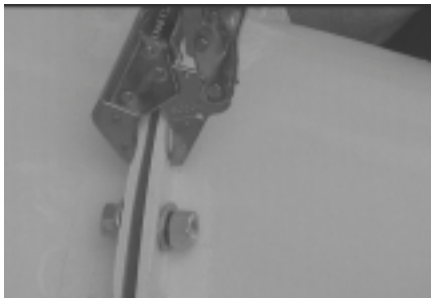


Fig. 2



Fig. 3

Step 2: Legs to Flume Assembly

Attach legs to flume. (**Fig. 4**) Use hardware package #2, legs to flume. **Note:** the longest legs are attached to the upper section of the flume. The shortest leg attaches to the inside curve of the flume, the remaining leg attaches to the outside lower flume curve. (**Fig. 5**)

NOTE: White Water Right (only) both legs on lower flume are equal length.



Fig. 4

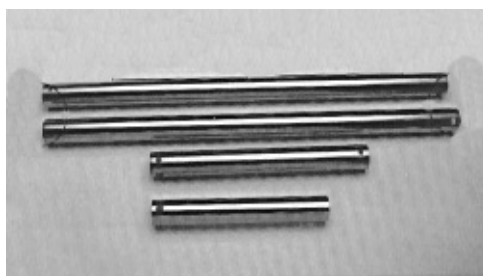


Fig. 5

2 A.

Attach Stainless Steel deck anchors to legs.

- ◆ For On-Deck installation attachment, see page 7.
- ◆ For In-Deck installation attachment, see page 8
- ◆ For “Paver” Deck installation attachment, see page 8.
 - **Note:** Separately purchased Paver deck hardware kit is necessary for this type of installation.

Step 3: Step to Flume Assembly

For the Wild Ride™ only: Using the same tools and technique for attaching the flume to flume sections, attach the two step sections together using hardware package #1, step to step.

For Wild Ride™ & Whitewater™: Use two people to flip the slide over to its upright position. Hold the flume itself. Do **not** hold legs to flip the slide over. Next, attach the white “right angle” brackets to the inside bottom of the step using the 3/8” x 1” hardware in package #3, bracket to step. (Figs. 1&2) The brackets should sit flush with the bottom of the step sides as shown in Fig. 2. Finally, align flume and tighten flume bolts.

Fig. 1



Fig. 2



Step 4: Handrail Assembly

Using a step stool/ladder have a helper position the upper portion of the rail over the hole located at the outer edge of the flume seat. (Fig. 4) Using the 3/4” socket wrench with extension, thread the bolt and washer up from the underside of the flume (handrails hardware package #1 for Wild Ride™ or handrails hardware package #5 for Whitewater™). **Do not fully tighten yet!** Repeat the procedure for the other rail. Using a 3/4” wrench, attach lower portion of the rail to step. (Fig. 5) Repeat for other side.

Fig. 4



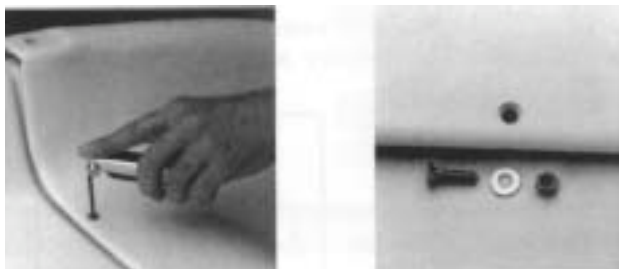
Fig. 5



Aligning the top step section to the upper flume (use center punch to align Step to Flume holes), temporarily assemble the step to flume only lightly tightening the flat head bolts with the 5/16” Allen wrench, Fig 3 (hardware package #1, step to flume for Wild Ride™ or hardware package #5, step to flume for Whitewater™) Recommended assembly: align bolt holes, position the flat head bolt from the top of the flume seat as illustrated Fig. 3. Use a washer and nut on the underside of the assembly. Secure all three Allen Pan Head bolts at the seat. Use the two remaining flat head bolts on the outside edge of the step to flume flange. When all bolts are fastened, continue to fully tighten.

*Silicone caulking is provided for Aesthetic purposes for use on the Seam at the step to flume section

Fig. 3



Step 5: Slide Anchoring

On-deck Installation:

Attach the Stainless Steel deck anchors to the legs. (Fig. 1 & 2) Use attachment at **Hole A**. (Fig. 2) Set the slide in the position for installation. With the legs straight (plumb), mark locations for drilling the anchor bolts for the legs and the step brackets. Carefully move the slide aside for drilling. Using a hammer drill with a 3/8" masonry bit, drill the holes for the concrete bolts. (Drill a minimum depth of 2") Refer to drilling illustration below. (Fig. 3)

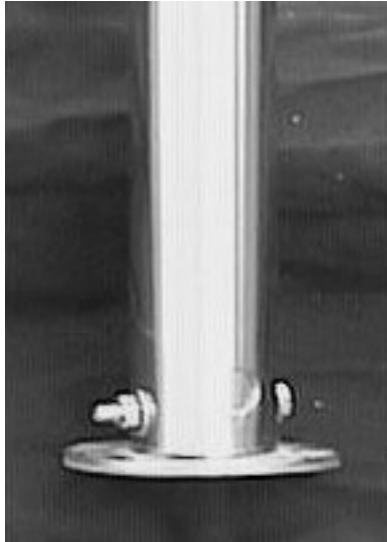


Fig. 1

Inter-Fab slides must be installed using the Stainless Steel deck anchors. The use of any other anchoring systems can void the slide warranty.

ON DECK INSTALLATION

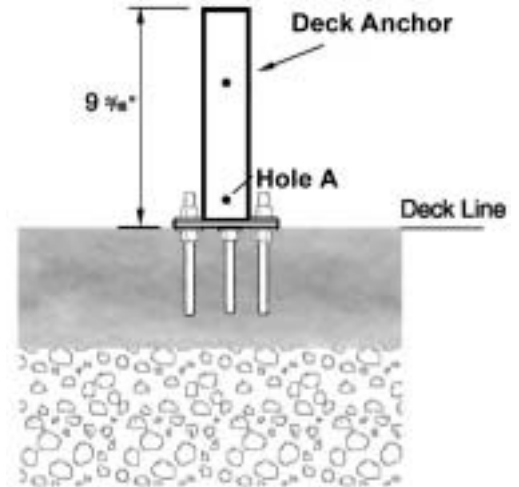


Fig. 2

C	Thread Length	1-7/8"
	Anchor diameter & drill bit size/threads per inch	3/8" /16
A	Overall Length	2-3/4"
B	Ma. Thickness of material to be fastened	7/8"
D	Min. Embedment in concrete	1-1/2"
	Installation torque (Ft. Lbs.)	25

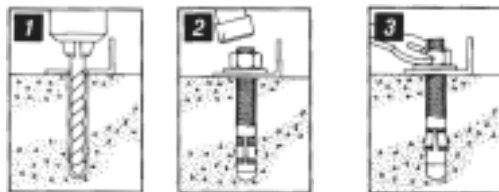
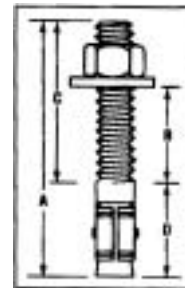
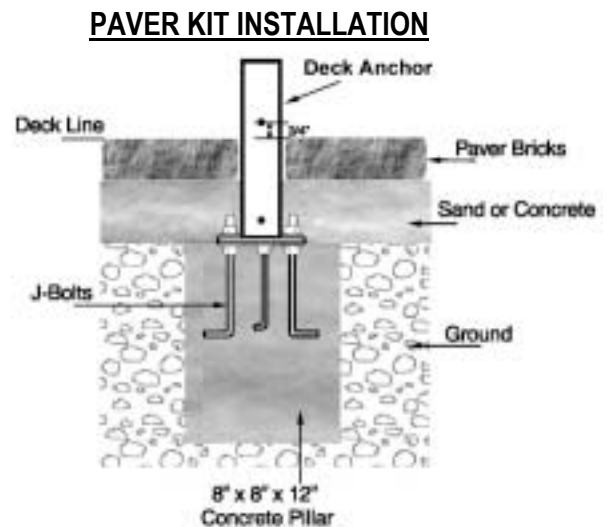
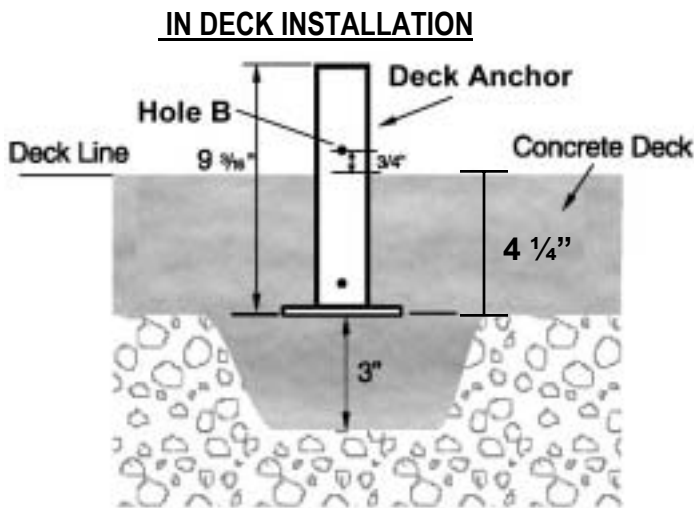


Fig. 3

1. Using a bit whose diameter equals the anchor diameter, drill hole to any depth exceeding the minimum embedment. Clean hole of debris.
2. Assemble anchor with nut and washer so that the top of the nut is flush with the top of the anchor. Drive anchor through material to be fastened so that the nut and washer is flush with surface of material.
3. Expand anchor by tightening nut 3 to 5 turns, or to the specified torque requirement. (See selection chart, Fig. 3)

In-Deck Installation / Optional Paver Deck Installation:

Attach legs to deck anchors using attachment **Hole B** (Fig. 1). This is essential to the In-deck installation. Make a mark with a marking pen or Duct tape 4 1/4" from the bottom of the deck anchor. Shim the legs so that the mark on each leg will be flush with the finished deck, with the legs straight (plumb). Pour to secure legs. This anchoring system allows for winter removal.



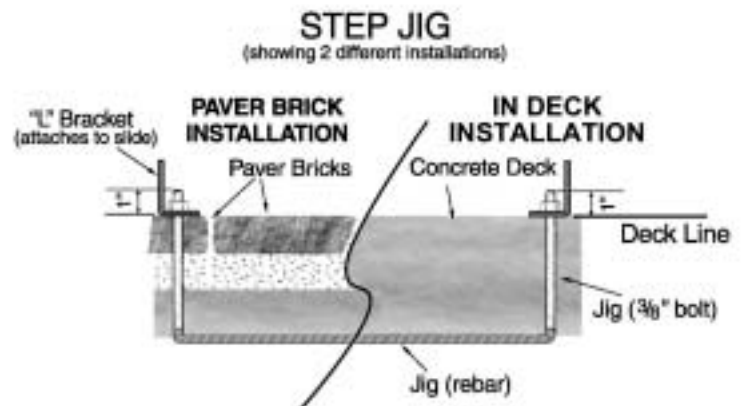
Note: Paver Kit and Step Jig available for separate purchase through your Inter-Fab distributor.

Whitewater™ kit: (Part# WWS-PK)

- ◆ 12 - "J" bolts 3/8" x 6"
- ◆ 1 - Step Jig = 21 1/2" wide on bolt center

Wild Ride™ kit: (Part# W-RIDE-PK)

- ◆ 12 - "J" bolts 3/8" x 6"
- ◆ 1 - Step Jig = 22 3/4" wide on bolt center



Water Supply:

- ◆ Feed the 1" diameter flex PVC hose (provided) through the hose hanger rings on the step & underside of the seat. Direction is optional. Leftside is illustrated. **(Fig. 1)**
- ◆ Use PVC primer & glue to attach the feed hose to the slide fitting. **(Fig. 2)**
- ◆ Attach ball valve shut off near deck "Stub Up".
- ◆ Attach hose to deck "Stub Up" last.

Note: For best results, the underground water feed from the filtration equipment should be either 1 ½" or 2" diameter pipe. An adapter bushing (not provided) should be used to "step down" the 1" slide water supply hose.



Fig. 1



Fig. 2



Fig. 3

Water Supply Includes: 10' of 1" flex pipe, 1" on/off ball valve.

For best results, use clear glue and primer for plumbing installation.

Final Installation Note: Upon completing the slide assembly, secure the vinyl nut caps provided on each exposed nut and bolt. For additional adhesion and security, it is recommended to apply a light coat of white or clear silicone to the inside of the vinyl nut cap.

echoes of nature™ Slide Rock™

Panel Installation Guide

Install Whitewater™ slide per instructions prior to installation of rock panels. For best results, outline of the rock should match up with the molding trim edge along the side of the slide. (Fig.1)

Note: On-deck leg installation must be used when using the Slide Rock panels



Fig. 1

Caution: Do not drag Rock panels over deck. This may cause chipping along bottom of the panel.

Front Panel Installation:

1). Position Rock along side of slide. Make sure Rock does not extend over edge of Pool. “ If needed drill 1/8” pilot holes or use 1/4” socket drill attachment. Self- tapping screws & nylon washers are provided to attach Rock to flume end and top of step edge. (Figs. 2&3) Check for proper alignment and install remaining screws and nylon washers.

2). Using Blue Cement screws & nylon washers, anchor bottom of panel to deck surface. (Fig. 4) **Tools needed; Hammer drill and a 5/32nd inch drill bit, with a long shank (6 inches) to allow room between drill and Rock.**



Fig. 2



Fig. 3



Fig. 4

Rear Panel Installation:

3). Join two panels together using bolts, wing nuts & washers.

4). Align panels at the rear, attach screw and washer next to top of panel at the step. Install screw at the bottom of the panel at the Flume end. Install remaining screws and washers as installed for the front panel.

5). Caulking cord and touch-up paint are provided. Use the caulking cord to cover screw heads and washers. Paint screw heads and caulk with touch-up paint kit. Use a blotting motion to paint caulking.

Slide Care & Maintenance

(Acrylic Components – Step & Flume)

1. General Cleaning

- Use nonabrasive soap and water when possible.
- Review cleaner's label instructions before applying to acrylic surface.
- Avoid harsh chemicals and disinfectants.

You may safely use:*

- Chlorox
- Spic & Span Powder
- Mr. Clean
- Formula 409
- Liquid Comet
- Windex
- Glass Plus
- Soft Scrub
- Calgon Bath Oil Beads

Do not use:

- Lysol Disinfectant Spray
- Dow Disinfectant Bathroom Cleaner
- Pinesol
- Whitecap
- Lestoil

2. Light scratches, abrasions, gloss, etc.

Light abrasions and scratches may be removed and original gloss fully restored using the following materials.*

- Novus plastic polish (Novus, Inc.)
- Mirror Glaze Professional Formula #17 (Mirror Bright Polish Co., Irvine, CA)
- Permatex Plastic Cleaner #403D (Permatex Co., Kansas City, KS)
- "J-Wax" or "Kit" Automotive Cleaner/Waxes (S.C. Johnson & Son)
- DuPont or Turtlewax "White Polish" automotive polishing compound.

Light Scratches: Very light scratches, scuff marks and haze can be hand polished with Permatex Plastic Cleaner or Gel-Gloss. Follow the manufacturer's guidelines. Clean cotton cloth works best for applying the polish and buffing.*

*These suggestions and data based on information we believe to be reliable, from our acrylic manufacturer. They are offered in good faith, but without guarantee, as conditions and methods of use and procedures are beyond our control.

Stainless Steel Rail Maintenance

Stainless steel like any other metal is susceptible to water spotting, discoloration, or rust due to reactions with chemicals or the environment.

- ◆ Poor Chemical balance in the pool will cause oxidation and discoloration to occur in stainless steel.
- ◆ Dispensing concentrated amounts of chlorine near stainless steel can cause oxidation. Pour chemicals away from stainless steel.
- ◆ Storing concentrated chlorine and stainless steel together will cause oxidation.

To clean Stainless Steel, use your choice of the following:

- ◆ Brasso - Available at supermarkets and hardware stores. Follow the Manufacturers suggested directions.
- ◆ AJAX or Soft Scrub – Rub these mild abrasives on the rail until rust, spots, or discoloration are removed. Thoroughly rinse rail and dry with a soft cloth.
- ◆ Diatomaceous earth (D.E.) – Rub on with a soft cloth, rinse and dry.
- ◆ After cleaning, use a good metal polish for stainless steel for added beauty and protection.
- ◆ In seasonal pool use environment, rails should be cleaned and polished at the beginning and end of the swimming season.

Hard water and chemicals will always be a problem, but regular maintenance will keep the rails looking new.



LIMITED WARRANTY

Inter-Fab, Inc. warrants all products to be free of defects in manufacturing, materials or workmanship for three (3) years from date of end user purchase. Products which fail or become defective during the warranty period, except as a result of improper installation, improper use or care, negligence or natural accidents (acts of God) will be repaired or replaced at Inter-Fab's option at no charge.

echoes of nature™ products are individually handcrafted and painted by skilled artisans. Therefore, dimensional differentials +/- 1 inch and color variations are normal and will be excluded as grounds for warranty replacement.

To enact this warranty, product owner or representative must notify Inter-Fab, Inc. (or its wholesale agent) in writing, giving a full description of the nature of the product defect or failure along with proof of purchase date and serial number.

Inter-Fab, Inc. reserves the right to physically inspect damaged or defective products or components if necessary to determine the cause of the damage or defect, prior to authorizing repair or replacement of its products.

<p><u>Customer Service / Technical Support</u> Mon – Fri : 7am – 4pm MST 800.737.5386 customerservice@inter-fab.com</p>
